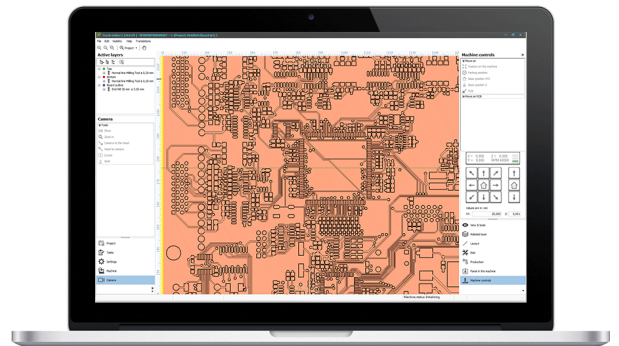


### Mipec 4MILL300

Universal machine for fast doublesided PCB prototyping. Toolchange is easy thanks PUSH&TURN nut on the top of the motor. No tool is required for toolchange. Drills with 0,2mm diameter can be drilled easily and insulation paths 0,1mm width can be milled with standard machine settings.

### TrackMaker - universal software package for all jobs

The new generation software for PCB prototyping: **TrackMaker** allows you quickly implement all PCB layers just by one click. A wide range of editable features, optimized milling times, design rule check, step and repeat function and also machine operation - all functions in one software package.



Max. PCB size:	200 x 140mm
Milling spindle:	software controlled brushless motor, max. 60.000RPM
Resolution:	1µm
Repeatability:	± 0.005 mm
Tool-change:	Manual tool-change (PUSH&TURN nut)
Tool-holder:	3,175mm
Milling depth adjustment:	µm precise depth adjustment
Drilling speed:	up to 120 strokes/min
Travel speed X/Y:	40mm/s
X/Y/Z drives:	hybride motors
Machine table:	flat milled aluminium table with central T-slot
Dimensions:	W-420 x D-455 x H-435mm
Weight:	40kg
Power supply:	115/230V, 50-60Hz
Software:	TrackMaker, connection with PC by USB cable