


**EASY INSTALLATION
OF CNC MACHINE**



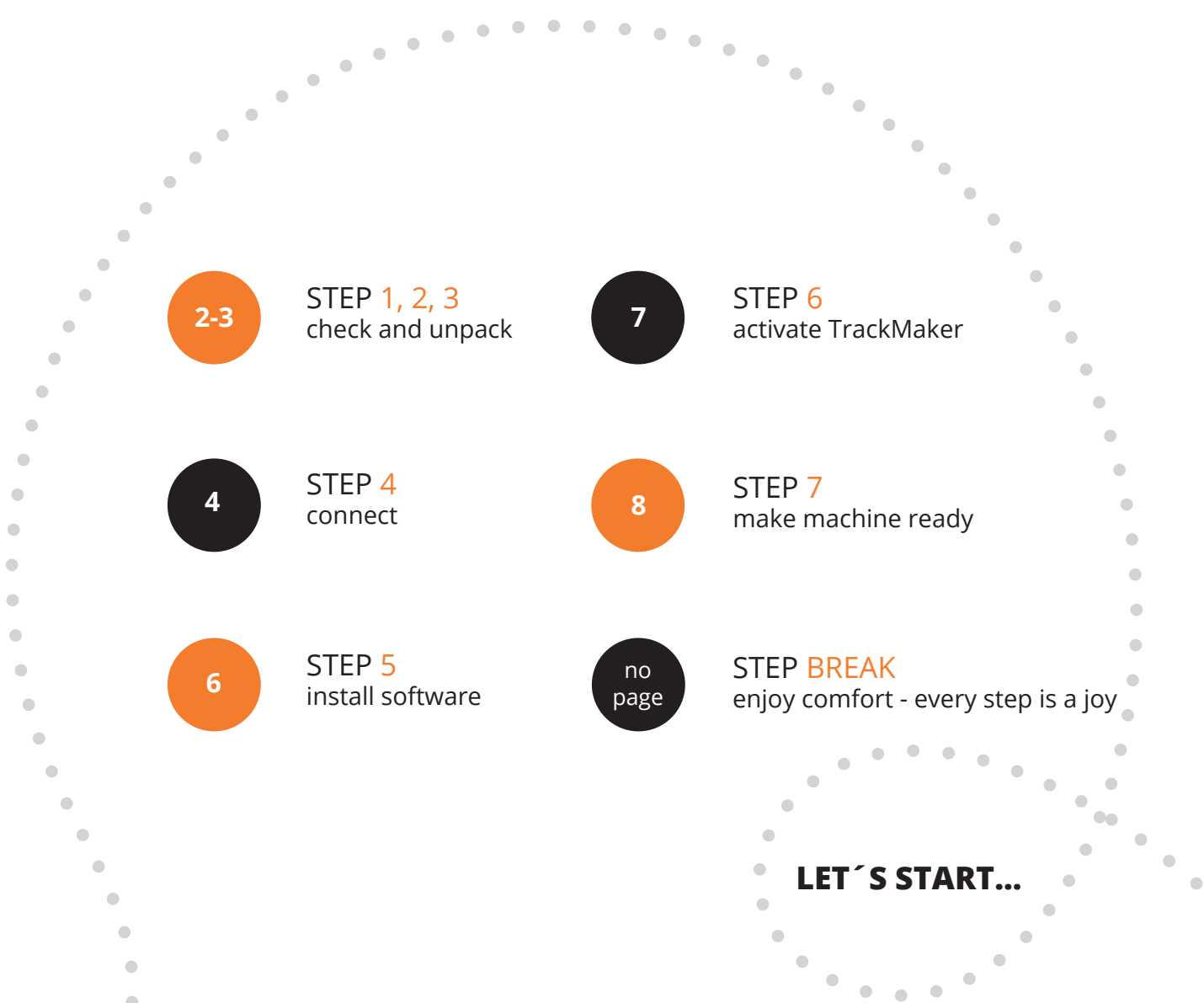
CNC machine

4MILL300 or 4MILL300ATC

Hello!

I was inserted into the box to help you save your nerves during unpacking and installation of the machine, its accessories and software. Read me carefully and I promise you, that together we will save hours of your work (as well as Mipec's

technicians)... and in the end, we will have time to take a rest with cup of coffee. You will need it as there is more than 100 pages of user manuals for software and machine settings waiting to be read. These are stored on the USB stick.



Check IT



Connect IT



Install IT



Finish IT

STEP 1

Check the package content. If you want, tick the check boxes to be sure, that my colleagues in Mippec sent you everything...



- ☐ 1 | CNC machine 4MILL300 or 4MILL300ATC
- ☐ 2 | Power cable
- ☐ 3 | USB cable
- ☐ 4 | Safety switch
- ☐ 5 | USB stick
- ☐ 6 | Starter toolset
- ☐ 7 | Never forget the most important... SOCKS!

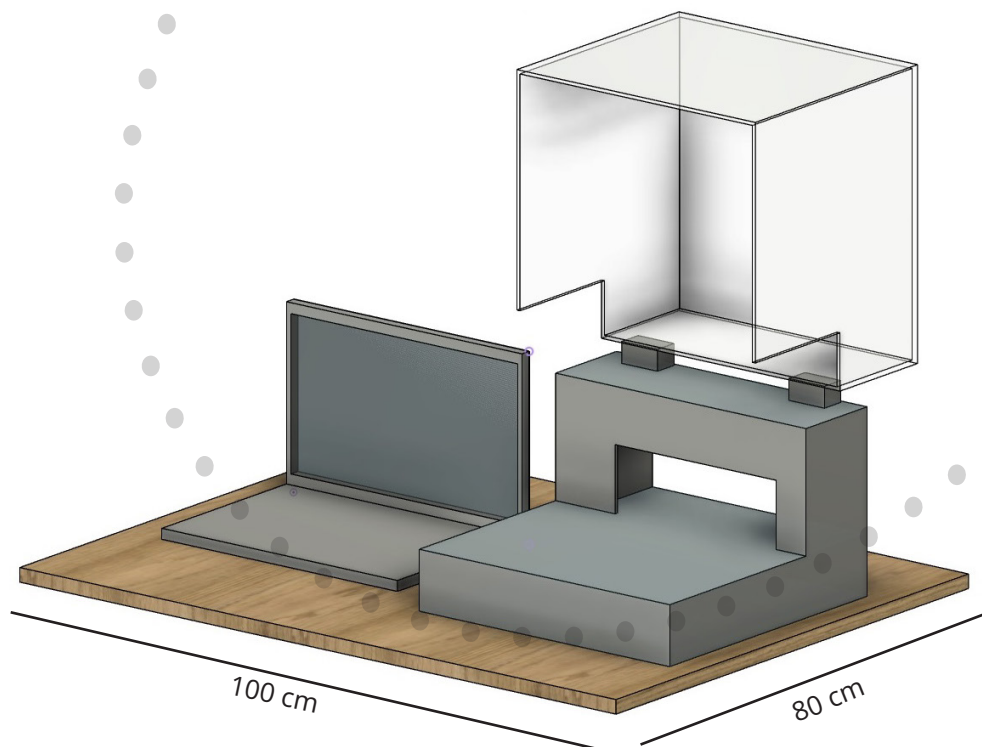


STEP 2

Before you remove the machine from the box, prepare the space for the machine.

The Machine must be placed on a sturdy, flat table. Note, that you will need to open the cover from time to time, you will place the PC somewhere around and you will connect the machine to power supply, PC, external

device etc... so, some free space around is required. Check the picture below with recommended dimensions for your reference. If you have the installation space ready, we can continue to unpacking.



STEP 3

Unpacking the machine

The Machine is packed in a carton box which is fixed to a transport pallet to avoid sliding the box during transport. Do not try to replace the box with the machine from the pallet before you remove the machine from the box - you will not succeed. There is a small carton box on the top of the machine with cabling, safety switch, starter set and USB stick. This you can put aside, we will need it a bit later.

Remove all the „air bubble“ plastics in between the machine and the carton box. Reach in the box, grab the machine on the bottom, pull the machine out of the carton box and put it on the previously arranged table. I have to warn you, machine is a bit heavy, so if you are a pregnant women or a person with sensitive back, you should not lift the machine and better ask someone to help.

THE MACHINE IS ON THE TABLE? PERFECT! COFFEE BREAK IS CLOSE...

You will need a PC with WIN8 or higher. Place it next to the machine, we will connect it with the PC in the next steps.

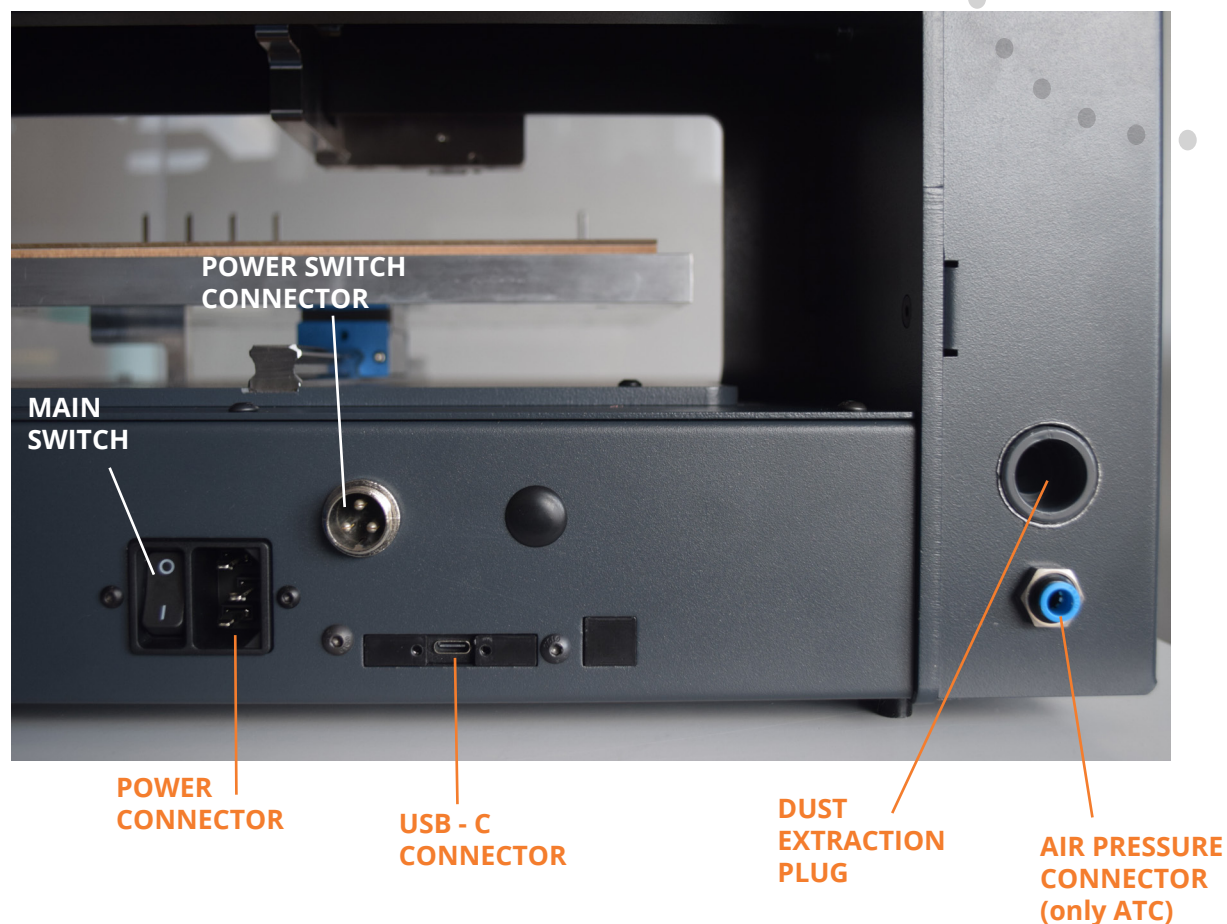




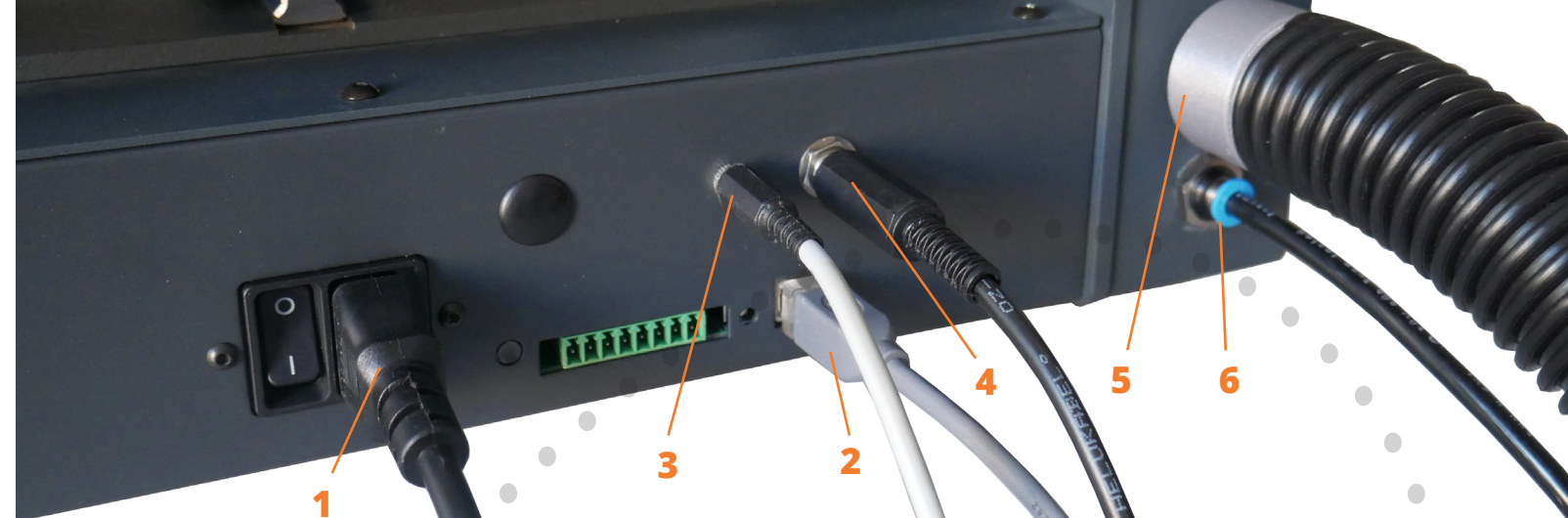
STEP 4

Let's connect the machine

BEFORE YOU START TO PLUG CABLES, HOOSSES OR OTHER STUFF, I'D LIKE TO TELL YOU SOMETHING ABOUT THE CONNECTORS AT THE BACKSIDE.



Great, you know all connectors, plugs or sockets now. Let's connect them. Now there is a time for small carton box you put on side before. Open it and find cables and safety switch inside. To help you recognize all the cables look at the picture on the next page.



- 1.** Connect the power cable to a power socket. Check the main switch, it should be in position 0. Plug the other end of the power cable to mains.
- 2.** Connect the USB cable to the USB connector and connect the other end of the USB cable to the PC.
- 3.** Connect the Safety switch jack to the Safety switch connector - the other end of the Safety switch is already connected to the Safety switch.
- 4.** Connect the Power switch or the Dust extraction electric jack to the Dust extraction electric connector. Connect the other end of the Dust extraction electric cable to the Dust extraction unit or the Power switch. Depending on your order, if you already have your own vacuum cleaner, don't plug anything here.
- 5.** Connect the Dust extraction hose to the Dust extraction plug. If you have your own vacuum cleaner, you will need to make some adapter to connect the hose. After the coffee break you can find some drawing and dimensions of the adapter in the machine manual stored on the USB stick.
- 6.** And if you have an ATC machine, connect also an air pressure hose to the Air pressure connector.

CABLING, CABLING, CABLING. IT'S MESSY, RIGHT? BUT YOU ARE SKILLED AND CAPABLE TO CONNECT EVERYTHING. **NICE!**

STEP 5

Software installation



NOW LET'S DO SOMETHING WITH THE PC YOU HAD BROUGHT AND CONNECTED TO THE MACHINE BEFORE. WE HAVE TO INSTALL TRACKMAKER SOFTWARE

Run the PC and connect the USB stick delivered with the machine (packed in the same box as cables and starter toolset). There are folders with different user manuals and a setup.exe file on the USB stick. A double click on setup.exe file will run the installation process. That's a standard procedure like installing any other software. For sure, you know better than me how to run an installation.

Great! We have finished half of our IT job.



STEP 6

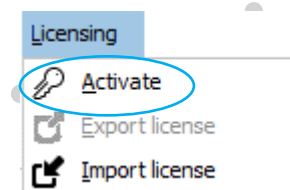
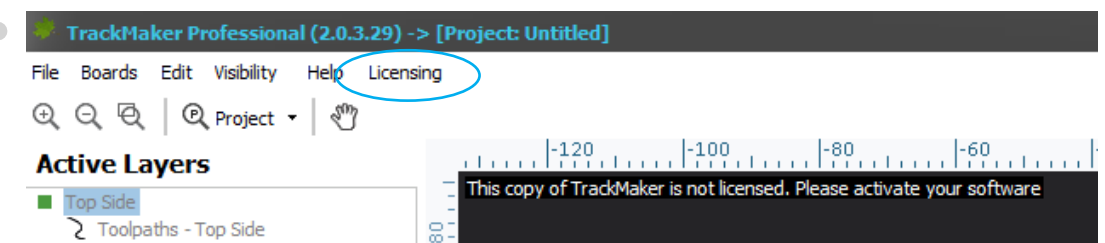
We must activate TrackMaker now



FOR THE ACTIVATION (**YES**, REALLY ONLY FOR THE ACTIVATION) THE PC MUST BE CONNECTED TO THE INTERNET

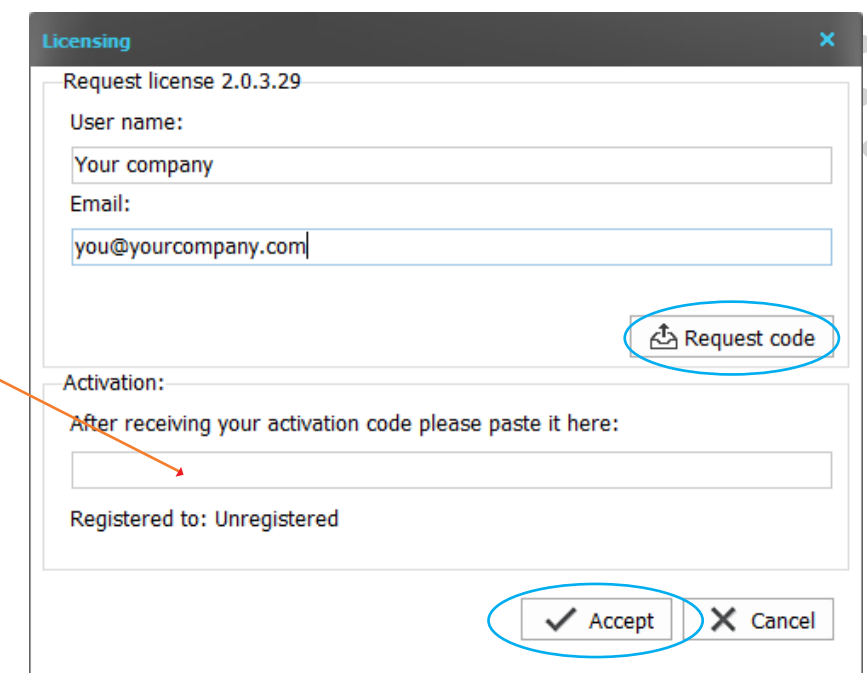
The Installer created TrackMaker shortcut on the desktop. And now an important thing! For any procedures related to the licence you **MUST** run TrackMaker as AN ADMINISTRATOR.

Click on the right button on TrackMaker shortcut and choose RUN AS ADMINISTRATOR. Then confirm Windows safety pop-up and TrackMaker will start. In the upper command bar find **LI-CENSING** tab and then **ACTIVATE**. Fill in user name and e-mail and submit **REQUEST CODE**. Now we have to wait. Your request was sent to our server, our technicians will check and verify your request and after the verification they will send you an activation code.



WHEN YOU RECEIVE THE CODE, COPY AND PASTE IT INCLUDING ALL CHARACTERS HERE

WHEN YOU **ACCEPT**, YOUR TRACKMAKER WILL BE ACTIVATED.

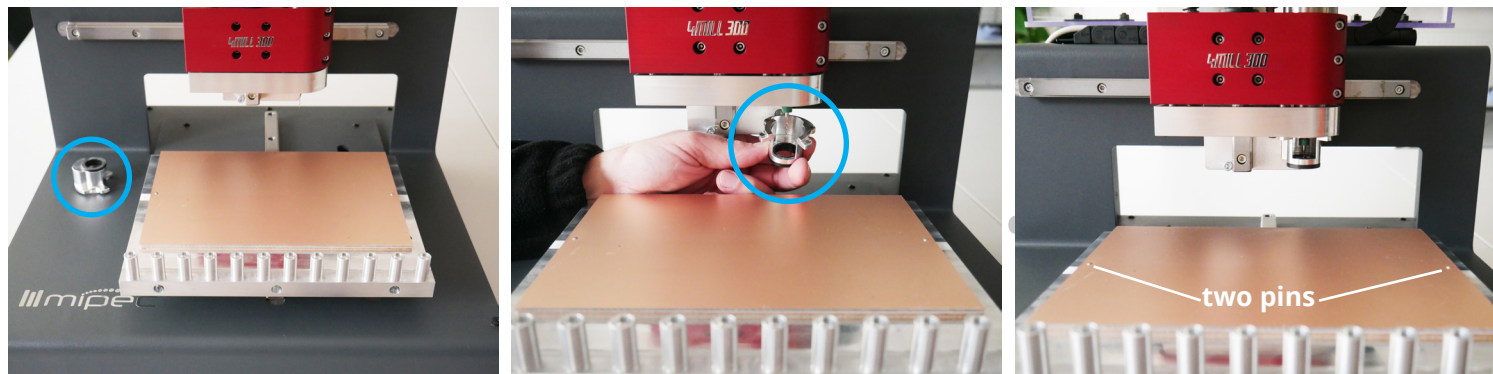


STEP 7

Make the machine ready in the meantime

DON'T WASTE YOUR TIME AND WHEN WE ARE WAITING FOR THE CODE, WE CAN MAKE SOME LITTLE THINGS AROUND THE MACHINE TO HAVE IT READY FOR WORK

1. Remove the styrofoam support. For safety reasons during transport we supported the Z axis by styrofoam. Turn manually with the Z axis screw to lift the Z axis a little. Did you succeed? Great, you are really good! Take the styrofoam and throw it to a bin.
2. Put on the engraving head. The **engraving head** should be placed on the machine next to the machine table. There are 4 magnets and if nothing serious happens during transport, it should be still there. Take the head and **click it from the bottom of the Z axis**. There are also 4 magnets. The head should be orientated with the opening to the front. If you take a look, there is no chance to set it incorrectly, just one correct position is possible. This magnet is here to make the tool change easier. Whenever you can remove the engraving head, change the tool and click it back. Of course, if you have ATC, you will keep it at place.



3. There is a tool in the motor to protect the clamp during transport. Do not try to remove it now, wait until you find more information in other user manual, especially the paragraph with toolchanger.

4. Put the material on the table. In the starter set you have 2 types of material, white boards and copper boards. The white board is called underlay material. This is here to protect the machine against tools working through the PCB material like drills or contour routers. And this copper boards I don't have to explain... you know their purpose for sure.

Take the white underlay board and place it on the machine table, the position is given by **two pins** on the sides of the table. There is a little free play on the pins, don't worry, we don't need to have it tight. Now, when we have underlay on, put on the copper plate. Again, position is given by pins (other function and description of pins you can find in the other manual). We need to have the copper plates tightened, so it can be a bit hard to press the board over the pin. If it is too hard, take the 3mm drill from your toolset, and clean the hole in the copper plate. Just firmly.

5. Even though we don't have TrackMaker activated yet, we can let the PC download drivers. The machine and the PC are connected by the USB cable, and the PC is connected to the internet because we are waiting for the code, so just start the machine by the main switch. Windows should find new USB device and should start with searching and installation of new drivers. If not, contact my colleagues on support@mipec.eu or maybe you are an IT expert and you can find and install drivers by yourself. If so, I have to take off my hat.



OK, perfect!

That's all from me at the moment. My pdf brothers on the USB stick will bring you deeper in TrackMaker and the machine operation. I wish you a lot of fun with them.

Did you receive the code already? No? Doesn't matter, you have successfully finished the machine and software installation and you can relax a bit.

Thank you for reading till here and remember - if you will need any help or have any questions, contact my colleagues by mail support@mipec.eu or info@mipec.eu.

Oh, one more thing, if you find any problems with me (I mean with this document) we will really appreciate your feedback.





MIPEC

P2J Technology s.r.o.
Dolní Rovně 153
Czech Republic

info@mipec.eu
mipec.eu

